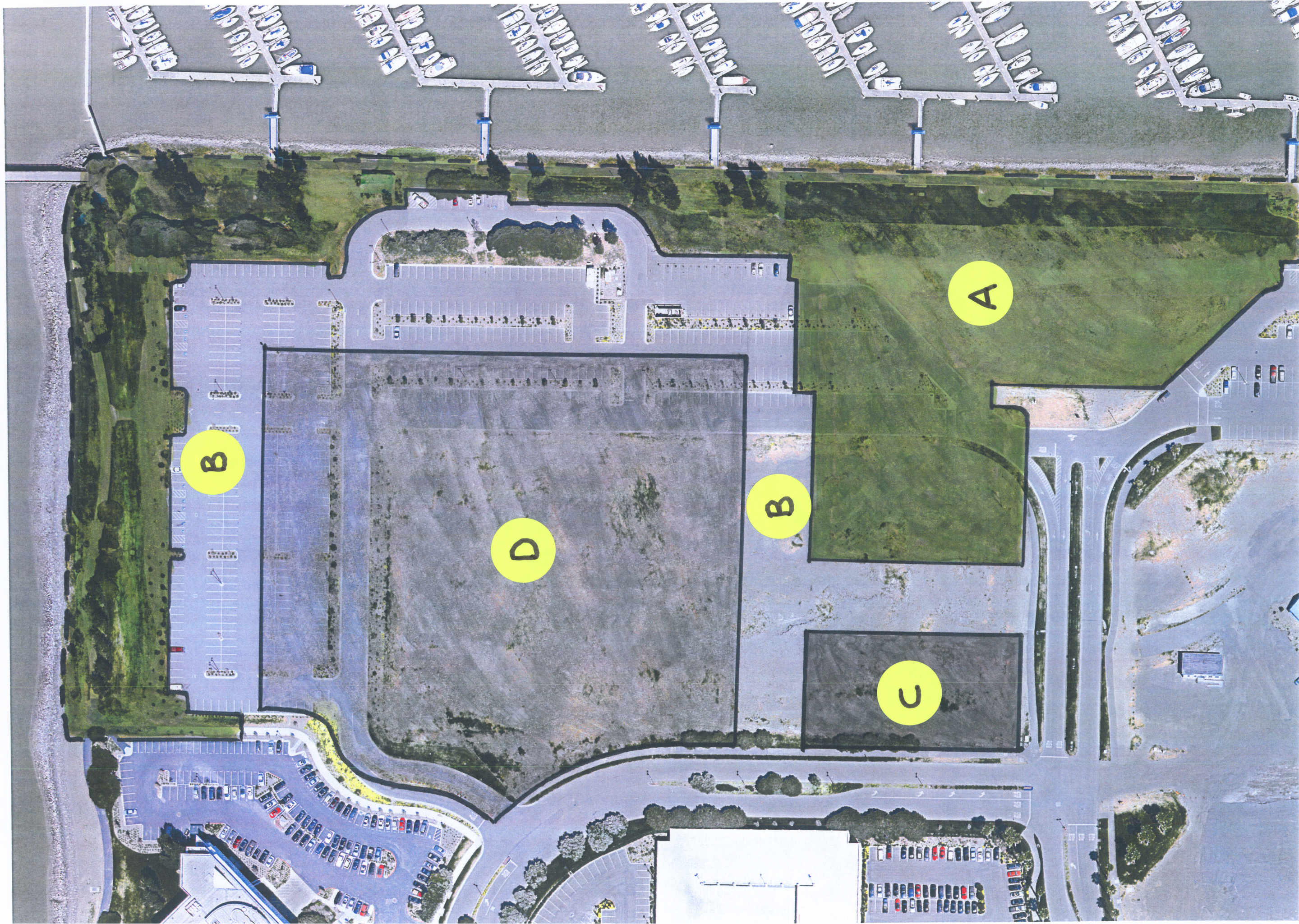
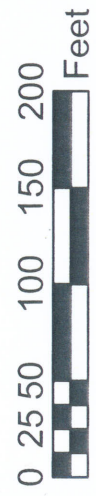


Existing Conditions A. (E) Leasehold: 3.4 ac + 0.2*
* BayTrail Segment Adjacent



CONCEPT A
 Land Reconfiguration
 9/3/13

- A.** Public Park: 7.3 ac.
- B.** Reconfigure (E) Parking + New Parking by Park: 320 + 103 = 423 sp.
- C.** Proposed Leasehold: 0.8 ac.
- D.** Proposed UPC Parcel: 6.1 ac.



Notes:

All figures are approximate and subject to further design and City approval.



CONCEPT B
Expand Park @ NE Corner
320 Parking Spaces

9/3/13

- A. Public Park: 4.4 ac
- B. Retained Parking: 320 SP.
- C. (E) Leasehold: 3.4 ac + 0.2*
- D. (E) UPC Parcel: 6.1 ac

* Buy Trail segment.



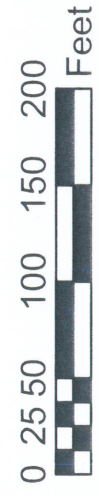
Note:
All figures are approximate
and subject to further design
and City approval.



CONCEPT C
 Expand Park @ NE Corner
 423 Parking Spaces
 9/3/13

- A. Public Park: 3.7 ac.
- B. Retained Parking: 423 sp.
- C. (E) Leasehold: 3.4 ac + 0.2*
- D. (E) UPC Parcel: 6.1 ac

* Bay Trail Segment.



Note:
 All figures are approximate
 and subject to further design
 and City approval.